



Creating Opportunities. Powering Possibilities.

Graphic Standards Manual

TABLE OF CONTENTS

1	Introduction
4	Brand in Words
7	Logo Usage
12	Color Palette
13	Typography
14	Photography Style
15	Brand Usage
21	Templates
25	Exceptions
26	FAQs
29	Resources

WHY DO WE NEED A BRAND FOR TENNESSEE'S COMMUNITY COLLEGES?

That's a good question. Each of the 13 Tennessee community colleges already has a strong brand that is well recognized within its service area. So why do we need a brand for the community college system?

It's important to note that the system brand does not replace the brands of the individual community colleges. Rather, it promotes the advantages of attending a community college in Tennessee, reflecting the common strengths of all 13 schools. It also strengthens the emotional connection between the people of Tennessee and 13 quality, affordable institutions that can help them achieve their goals and aspirations.

The result: A strong brand for the Tennessee's Community Colleges system and stronger brand awareness for the individual schools.

THE TENNESSEE'S COMMUNITY COLLEGES BRAND: AN OVERVIEW

The goal of the Tennessee's Community Colleges brand is to help unlock the full potential of all its institutions and increase the number of Tennesseans who hold post-secondary degrees or certificates. It does not replace the individual brands of the community colleges. Instead, it is an “umbrella brand” that reflects the common strengths of these institutions.

Brand communications, including a dedicated website, will answer common questions regarding the quality of a community college education, the transferability of credits, campus life and more. By emphasizing strengths, sharing information and addressing misconceptions, the goal of the brand is to encourage more Tennesseans to consider a community college education and drive greater interest in the 13 individual schools.

WHY DO WE NEED A STYLE GUIDE?

Good branding is about consistency. It's easier for people to understand, recognize and embrace a brand when it looks, sounds and feels the same way, no matter how or where it is encountered.

That's why we created this style guide. It will help everyone associated with the Tennessee's Community Colleges brand present it consistently through the logo, words, colors, imagery, font usage and more.

We also hope that by providing you with clear, simple guidelines for using the brand, it will help eliminate confusion and make your job easier.

If you have questions about the branding guidelines, please contact Monica Greppin-Watts, Communications Director, Tennessee Board of Regents, 615-366-4417, Monica.Greppin-Watts@tbr.edu

BRAND ESSENCE

Tennessee's Community Colleges prepare you to achieve your personal and professional goals and aspirations.

BRAND PROMISE

Tennessee's Community Colleges provide a high-quality, affordable, convenient and personal education to prepare you for success whether you plan to pursue additional post-secondary education, enter the workforce or increase your earnings potential.

BRAND POSITIONING

Tennessee's Community Colleges offer unbeatable value. Our experienced faculty, relevant coursework, affordable costs, small classes, convenient locations, rich campus life and transferable credits make a Tennessee community college education the smart choice.

BRAND ATTRIBUTES

- Smart
- Quality
- Value
- Convenient
- Caring
- Empowering
- Personal
- Intimate
- Rewarding
- Responsive
- Committed
- Relevant

tone

- Smart and confident
- Engaging and personal

KEY MESSAGES

General

- **We create opportunity.** Our diverse campuses and course offerings create college opportunity for all Tennesseans regardless of age or income.
- **We offer a high-quality education.** We have the same accreditation as four-year schools, instructors with advanced degrees and practical experience in their fields, and state-of-the-art classroom technologies.
- **We are affordable.** With our low costs and opportunities for financial assistance and scholarships, we offer incredible value compared to four-year universities and for-profit schools.
- **We are personal.** Our students receive personal attention and one-on-one assistance from caring, quality faculty, forging lifelong friendships with instructors and other students.
- **We are convenient.** Our locations are close to home and our flexible class and online offerings allow you to balance school, work and family schedules.

KEY MESSAGES (CONT'D)

Student-Focused Messages

- **Our credits are transferrable.** Our accreditation and the clear-cut paths of Tennessee Transfer Pathways help ensure the credits of your community college degree will transfer to four-year schools.
- **We get your career off to a strong start.** A degree or certificate from one of Tennessee's Community Colleges prepares you to continue your college education at a four-year school and readies you for the workplace in two years or less.
- **We offer a rich campus life.** Our diversity, attractive campuses, student clubs and activities, honors programs, athletics and international studies programs deliver a rich and fulfilling college experience.
- **We prepare you well for employment.** Our relevant coursework, hands-on training and state-of-the-art technologies ensure you have the skills and knowledge to succeed in the workplace, and we have a proven record of job placement success.
- **We boost your earnings potential.** Our degrees and certificates position you to advance your career and improve your quality of life.
- **We can help you get a fresh start.** Our degree and certificate programs provide you with a quality education to prepare you for a new career in two years or less.

The community college logo consists of two elements: the mark and a typographical treatment of the system name. This logo can be used with or without the tagline.

The mark is a shield and stars icon in which the shield represents strength, honor and academic excellence while the stars are emblematic of the tri-star design in the Tennessee state flag where the stars represent the three grand divisions of the state.

The name of the system depicted in the typography reflects ownership – these are the community colleges of the state of Tennessee.

Tennessee's Community Colleges share a commitment to excellence in their academic programs, research, service and outreach to advance the economic, technological, civic and cultural well-being for Tennessee.



Creating Opportunities. Powering Possibilities.

The logo can be used in a variety of ways shown here, based on the application. Both four-color and grayscale versions are shown. The logos should never vary from the identity standards.



Creating Opportunities. Powering Possibilities.



Creating Opportunities. Powering Possibilities.



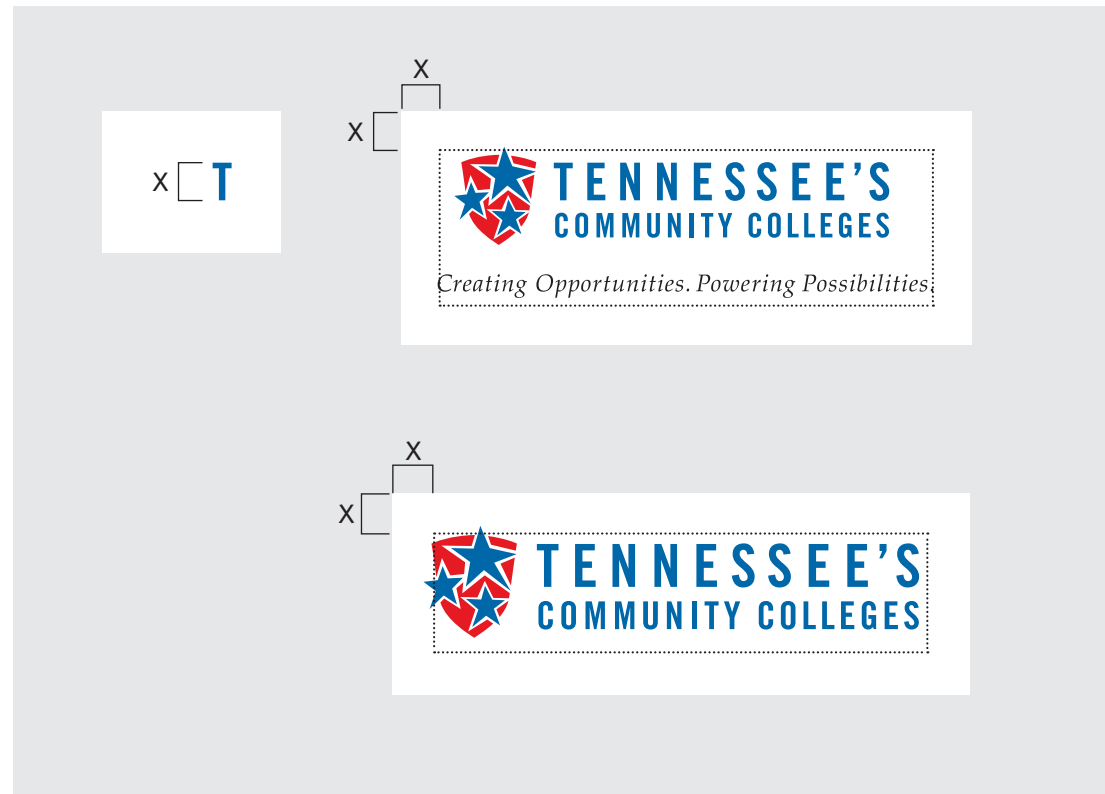
Creating Opportunities. Powering Possibilities.

Logo Usage: Clearspace & Minimum Size

9

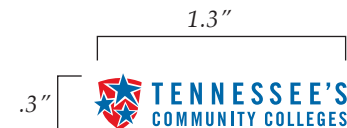
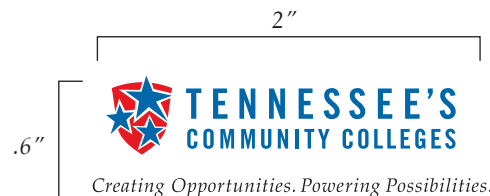
The minimum clearspace around the Tennessee's Community Colleges logo is defined as the height of the "T" in the logo (shown as X). The clearspace is thus proportional to the size at which the logo is used.

Clearspace is measured from a bounding box around the logo, as shown by the dotted line in the illustration shown.



The minimum size that the logo should be shown with the tagline is 2" x .6". This is to ensure the legibility of the tagline. The minimum size that the logo should be shown without the tagline is 1.3" x .3".

There is no determined maximum size as long as the proper scalable file (.eps or .ai) is used.



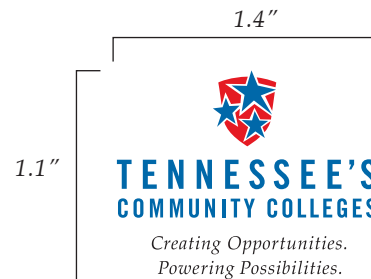
Logo Usage: Vertical Version & Minimum Size

10

The horizontal version of the logo is always preferred. However, the vertical version may be used whenever the original, horizontal version will not fit a space.

The minimum size that the vertical logo should be shown with the tagline is 1.4" x 1.1". This is to ensure legibility of the tagline. The minimum size that the logo should be shown without the tagline is 1" x .6".

There is no determined maximum size as long as the proper scalable file (.eps or .ai) is used.



The Tennessee's Community Colleges logo should never be redrawn, recreated or altered in any way, nor should the relative size, position or orientation of its components be changed.



DO NOT rotate, skew, stretch or otherwise alter the shape of the logo



Creating Opportunities. Powering Possibilities.

DO NOT screen or lighten the logo



DO NOT change the color of any of the logo elements



*Creating Opportunities.
Powering Possibilities.*

DO NOT change the relationship of logo elements



DO NOT apply logo on low-contrast backgrounds



Creating Opportunities. Powering Possibilities.

DO NOT remove any of the logo elements

Primary & Secondary Color Palette

12

PRIMARY COLOR PALETTE

The Tennessee's Community Colleges color palette consists of PMS 2945, PMS 1797 and black, the colors in which the Tennessee's Community Colleges logo appears.

Spot (PMS), process (CMYK), and on-screen (HEX, RGB) equivalents for all colors are shown.

<i>Print</i> PMS 2945 100C 45M 0Y 14K
<i>Web</i> 0069AA 0R 105G 170B

<i>Print</i> PMS 1797 0C 100M 99Y 4K
<i>Web</i> E31B23 227R 27G 35B

<i>Print</i> PMS BLACK 0C 0M 0Y 100K
<i>Web</i> 000000 0R 0G 0B

SECONDARY COLOR PALETTE

Includes PMS 2905 and PMS 130, colors that work with the logo. Both colors could be used as accent colors, but yellow especially should be used sparingly ie: only as an accent color in a thin line.

<i>Print</i> PMS 2905 41C 2M 0Y 0K
<i>Web</i> A2D1F2 162R 209G 242B

<i>Print</i> PMS 130 0C 30M 100Y 0K
<i>Web</i> ECB731 236R 183G 49B



An example of the yellow line being used as a design element in the PowerPoint template.

FOR PRINT

Trade Gothic is a typeface that has many different weights and versions. Trade Gothic (Bold Condensed No. 20) can be used primarily for headline copy.

Trade Gothic (Condensed No. 18) can be used for body copy.

Palatino Italic is used for the logo tagline.

FOR WEB

Helvetica and Georgia are the primary typefaces for the Web. However, if those are not available, the typefaces listed below can be used:

SANS-SERIF

Helvetica, Arial, Sans-serif.

SERIF

Georgia, Times New Roman, Serif.

Trade Gothic (Bold Condensed No. 20)

abcdefghijklmnopqrstuvwxyz
ABCDEFGHIJKLMNOPQRSTUVWXYZ
0123456789 !@#\$%^&*

Trade Gothic (Condensed No. 18)

abcdefghijklmnopqrstuvwxyz
ABCDEFGHIJKLMNOPQRSTUVWXYZ
0123456789 !@#\$%^&*

Palatino (Italic)

abcdefghijklmnopqrstuvwxyz
ABCDEFGHIJKLMNOPQRSTUVWXYZ
0123456789 !@#\$%^&*

RECOMMENDATIONS

- Use in-focus pictures of students.
- Subject(s) can have eye contact with the camera, but it's not necessary.
- Avoid groups of people standing in a straight line or looking too posed.
- Choose photographs that are appropriate to the audience (use designer's discretion).
- In general, choose photos that are engaging, personal, and show the diversity of the schools.



When correspondence originates from Tennessee's Community Colleges, the logo should be used with the tagline.



Use of the logo with tagline in conjunction with the TBR seal.

When the logo is used as an endorsement in conjunction with a school logo, no tagline should be used, and the logo should be 60% of the size of the community college logo. Additionally, “Member of” should appear above the shield of the logo, outside of the required white space and in a point size that is smaller than “Community Colleges.”



Enlarged size

Member of



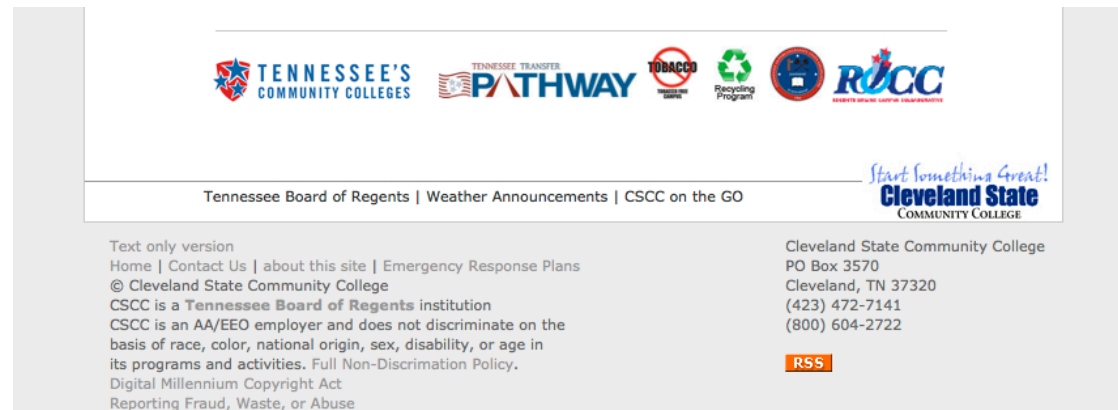
Minimum size

Member of

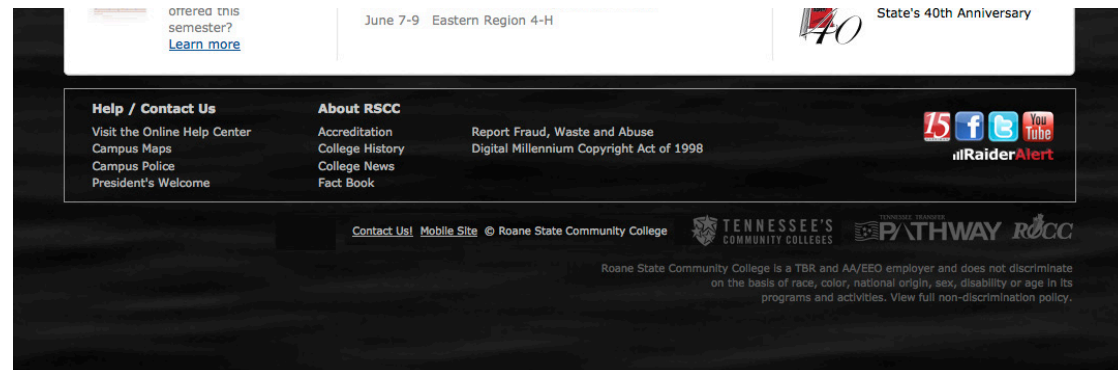


Use of the logo in conjunction with an individual college logo. The logo should be 60% of the size of the college logo to create a clear hierarchy. The logo should not be reduced any smaller than the minimum size. See page 9 for size requirements.

For the individual Community College websites, the logo should be placed along with any other logos on the bottom of the homepage, in the same style as the other logos.



Example of logo at bottom of school website in full color.



Example of logo at bottom of school website with the same treatment as the other logos.

For print ads, the logo should be designed into the ad so that its emphasis is secondary to the individual community college logo — preferably in the bottom half of the ad or in the lower right hand corner. In the case of multi-page ads or folders, the logo can be on the last page or back of the folder, in the lower half or bottom right.



Chattanooga State
Community College

Tennessee Transfer Pathways

The Tennessee Board of Regents and the University of Tennessee System have partnered to *guarantee* that every student entering a community college in Tennessee can transfer to an in-state public university to complete a bachelor's when they choose one of 50 guaranteed transfer pathways.

Students can earn an associate degree and transition seamlessly as a junior.

The 50 Pathways provide for a timely and cost-effective transition.

All earned credit hours apply toward a bachelor's degree in the same discipline.

Pathways transfers are effective as of fall 2011.

The Pathways guarantee admission to all public universities in the state, *except* for UT Knoxville.

Chattanooga State degrees included in the 50 Pathways:

Associate of Arts/Area of Emphasis		
Economics	English	Foreign Languages
History	Mathematics	Psychology
Sociology		
Associate of Science/Area of Emphasis		
Accounting	Biology	Business Admin
Chemistry	Criminal Justice	Economics
Mathematics	Physics	Political Science
Pre-Engineering	Psychology	Social Work
(Civil, Electrical and Mechanical Engineering)	Sociology	

Chattanooga State is an AA/EEO employer.

For more info go to
tntransferpathway.org



TENNESSEE'S
COMMUNITY COLLEGES

IN TELEVISION ADVERTISING

- For advertising directly from Tennessee's Community Colleges: The logo should appear with the tag line in a consistent place and size so that the tag line is clearly legible.
- For advertising by individual community colleges: The logo, without the tag line, should appear on the last frame of the ad. Emphasis should be secondary — it should be placed below the individual community college logo, no more than 60% of the size of the individual community college logo.

As an option, narration may designate the individual community college as “One of Tennessee's Community Colleges.”

IN RADIO ADVERTISING

The end of the spot should designate the individual community college as “One of Tennessee's Community Colleges.”

THROUGH PUBLIC RELATIONS

Press releases directly from Tennessee's Community Colleges:

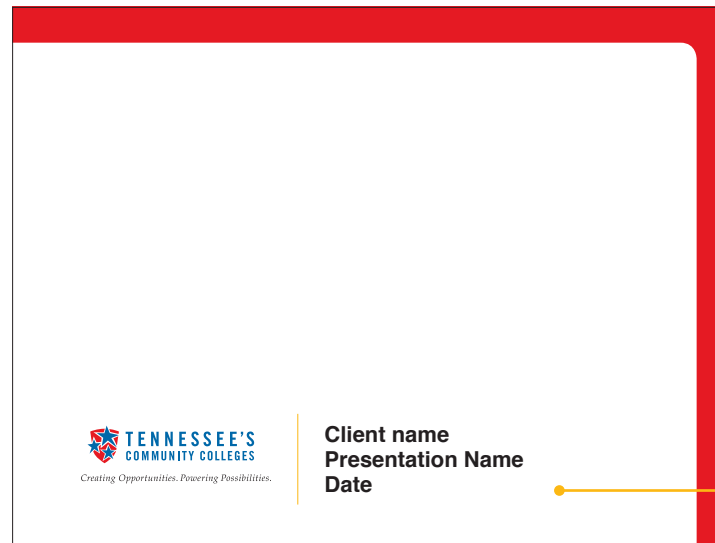
The boilerplate should be included at the end of each press release:

Tennessee's Community Colleges

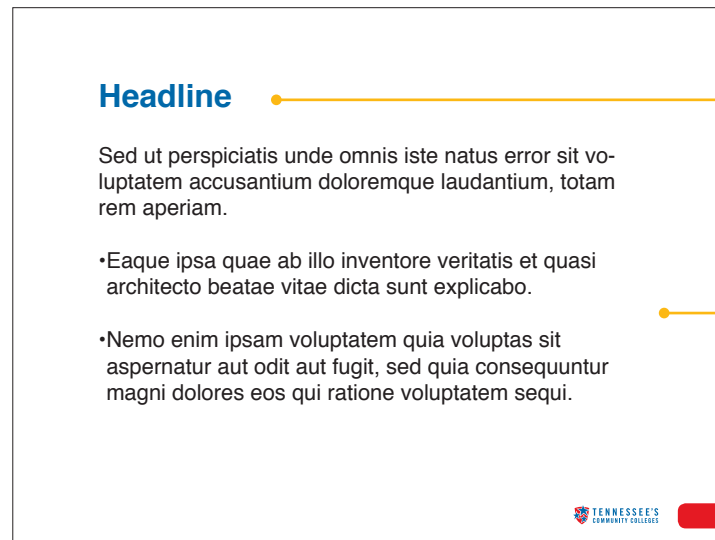
Tennessee's Community Colleges is a system of 13 colleges offering a high-quality, affordable, convenient and personal education to prepare students to achieve their educational and career goals in two years or less. We offer associates degree and certificate programs, workforce development programs and transfer pathways to four-year degrees. For more information, please visit us online at tncommunitycolleges.org

Press releases from the individual schools in the system:

The Tennessee's Community Colleges boilerplate should be included after the school's boilerplate at the end of the release.



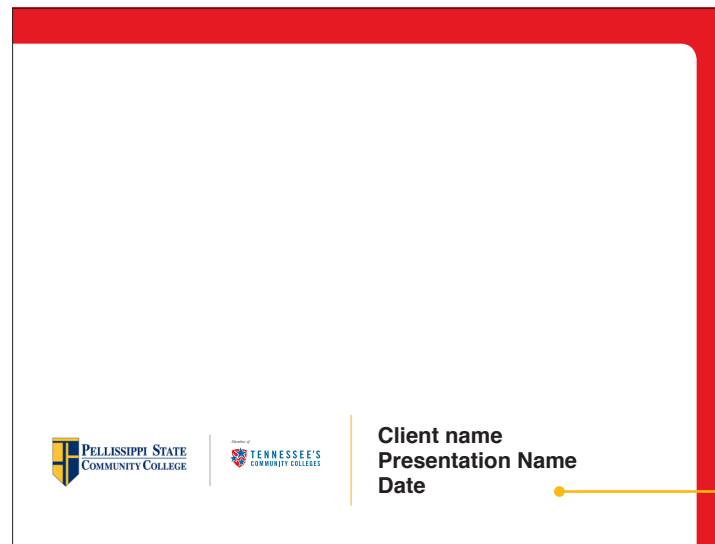
Helvetica Bold, 22pt
Color: 0R 0G 0B



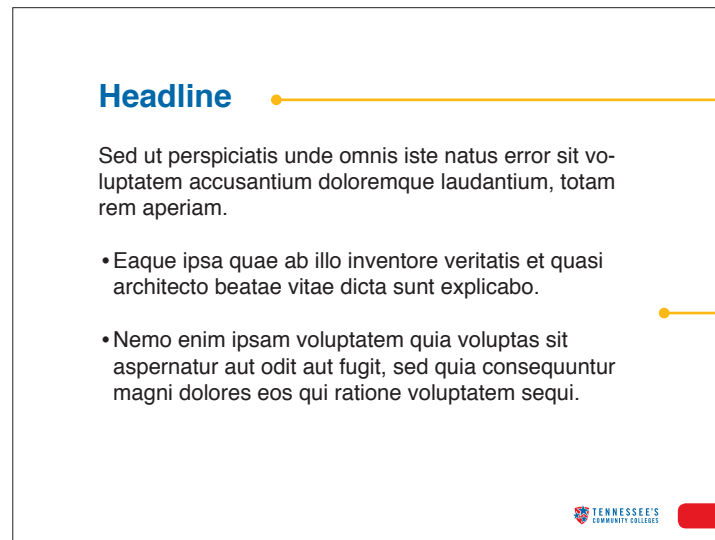
Helvetica Bold, 32pt
Color: 0R 105G 170B

Helvetica, 22pt
Color: 0R 0G 0B

If an individual college's mark is necessary on the PowerPoint, it can be applied in the same way as the two logos on Page 15.



Helvetica Bold, 22pt
Color: 0R 0G 0B



Helvetica Bold, 32pt
Color: 0R 105G 170B

Helvetica, 22pt
Color: 0R 0G 0B

Helvetica Oblique, 8pt
Color: 0R 0G 0B



Helvetica Regular, 22pt
Color: 0R 0G 0B

Helvetica Regular, 10pt
Color: 0R 0G 0B

Because of the wide variety of desktop and web browser email systems, a consistent signature can be difficult to achieve.

- Use a simple standard font like Helvetica (see example). Non-standard typefaces and HTML may not translate well across email systems.
- Refrain from using quotations or other philosophical statements. Your signature should reflect a professional and consistent viewpoint when conducting business through email.
- Backgrounds are not appropriate for signatures or email templates. However, you may include the Tennessee's Community Colleges logo/tagline image in your signature.

Helvetica (Bold), 12pt
Color: 0R 0G 0B

Name of Person

Helvetica (Italic), 10pt

Position

Helvetica
(Regular), 10pt

Name of College

Street Address • City, TN 37217-2833

Phone: 615-123-4567 • FAX: 615-123-4566

nameofperson@xxx.edu

Helvetica (Bold), 10pt
Color: 0R 0G 0B

pstcc.edu

Logo needs to
have maximum
height of .5"



PELLISSIPPI STATE
COMMUNITY COLLEGE

Member of



Helvetica (Italic), 9pt

Notice: This email and any files transmitted with it may contain PRIVILEGED or CONFIDENTIAL information and may be read or used only by the intended recipient. If you are not the intended recipient of the email or any of its attachments, please be advised that you have received this email in error and that any use, dissemination, distribution, forwarding, printing or copying of this email or any attached files is strictly prohibited. If you have received this email in error, please immediately purge it and all attachments and notify the sender by reply email or contact the sender at the number listed.

Although the Tennessee Board of Regents will work diligently to protect the integrity and consistency of the brand for Tennessee's Community Colleges, exceptions to this style guide may be allowed under certain special circumstances.

To seek an exception, please submit your request to Monica Greppin-Watts, Communications Director, Tennessee Board of Regents, 615-366-4417, Monica.Greppin-Watts@tbr.edu. Include a rationale for the request and examples of brand artwork or other communications to be approved.

HOW WAS THE NEW BRAND DEVELOPED?

The brand was developed through a collaborative process that involved representatives of all 13 community colleges. That process included a review of the existing brands for each college, campus visits, information gathering sessions and focus groups.

DO THESE GRAPHIC STANDARDS SUPERSEDE STANDARDS THAT HAVE ALREADY BEEN DEVELOPED FOR INDIVIDUAL SCHOOLS?

No. While these standards will help schools present the Tennessee's Community College brand consistently, individual schools will continue to follow their own graphic standards for their brands.

CAN COLORS OUTSIDE OF THE COLOR PALETTE BE USED IN DESIGNS FOR INDIVIDUAL COMMUNITY COLLEGES?

Yes. The color palette in these standards is only for communications featuring Tennessee's Community Colleges as the primary brand. Individual community colleges can continue to use colors associated with their brands in their own materials.

DO I NEED TO HAVE PHOTOS APPROVED BEFORE USING THEM?

No. The photography style included in this document is a recommendation only.

DOES THE TENNESSEE'S COMMUNITY COLLEGES LOGO HAVE TO APPEAR ON ALL COMMUNICATION FROM MY COMMUNITY COLLEGE?

No. The logo should be used on your website and in your marketing materials to communicate your affiliation with the Tennessee's Community Colleges system, similar to the way you present your affiliation with the Tennessee Board of Regents and the Regents Online Campus Collaborative. It does not need to appear on non-marketing communication such as administrative documents and campus signage.

HOW MUCH FREEDOM DO INDIVIDUAL COMMUNITY COLLEGES HAVE FOR PLACEMENT OF THE TENNESSEE'S COMMUNITY COLLEGES LOGO ON THEIR MATERIALS?

Because each community college has its own brand standards, you should use your best judgment as you follow the standards for placement of the Tennessee's Community College logo. However, we ask that you present the logo consistently in your materials to enhance recognition of Tennessee's Community Colleges brand.

UNDER WHAT CIRCUMSTANCES DO I NEED TO REQUEST AN EXCEPTION TO THE BRAND STANDARDS?

Any potential use of the brand that is inconsistent with the standards in this manual would require an exception. Examples include alterations to the logo, tagline, color palette, clearspace, minimum space, typography and templates. Contact Monica Greppin-Watts at monica.greppin-watts@tbr.edu to request an exception.

DOES EACH COLLEGE NEED TO PURCHASE THE TRADE GOTHIC AND PALATINO FONTS USED IN THE LOGO AND TAGLINE?

No, it is not necessary for individual colleges to purchase additional typefaces. We do recommend any materials created by or for the TBR or Office of Community Colleges specifically for the Tennessee's Community Colleges system utilize these type families for consistency with the brand. Individual colleges, however, can simply access the logos as graphic files from the Download Resources section.

Individual fonts or font families may be purchased from Fonts.com. When purchasing fonts, please select the OpenType format, which is the newest version and works well for both print and screen applications.

WHO DO I CONTACT IF I HAVE QUESTIONS ABOUT USE OF THE BRAND?

Please contact the Tennessee Board of Regents Communications Director Monica Greppin-Watts at monica.greppin-watts@tbr.edu.

The Tennessee's Community Colleges logo is trademarked and owned by the Tennessee Board of Regents for use by the Tennessee's Community Colleges system and its member colleges.

Noncommercial Use: Noncommercial use of the trademark is NOT permitted without consent. To request permission, please send your request to Monica Greppin-Watts, Communications Director, Tennessee Board of Regents, 1415 Murfreesboro Pike, Nashville, TN 37217 or monica.greppin-watts@tbr.edu.

Commercial Use: The Tennessee Community College's logo and brand is NOT available for commercial use; i.e., for use in any manner intended for commercial advantage or private monetary compensation.